

# MARKING SYSTEM

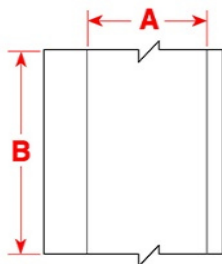
## HTM-THL 730, gloss silver SumiTag Thermal Transfer Blank Printable Labels



### Highlights

- Designed for applications in the aerospace, industries and wire processing
- Self-adhesive film
- Permanent solvent-based acrylic adhesive
- Suitable for thermal transfer printing
- Service Temp. Range -40 °C - 150 °C
- RoHS and REACH compliant
- Normen: IEC 60601-01; CSA Standard C22.2 No. 0 15-95 and UL File MH#16635

iTAG-Reference	Label Width (A) mm	Label Height (B) mm	Roll Size	Labels Across
HTM-THL-127-063-MP-S-101	12.7	6.35	10,000	5
HTM-THL-150-050-MP-S-700	15.0	5.0	10,000	4
HTM-THL-254-127-MP-S-106	25.4	12.7	10,000	3
HTM-THL-340-571-MP-S-143	34.0	57.15	5,000	
HTM-THL-380-190-SV-S	38.0	19.0	4,000	
HTM-THL-381-063-MP-S-114	38.1	6.35	5,000	2
HTM-THL-381-127-MP-S-119	38.1	12.7	10,000	2
HTM-THL-508-254-MP-S-195	50.8	25.4	5,000	2
HTM-THL-762-508-MP-S-188	76.2	50.8	1,000	1
HTM-THL-889-365-MP-S-148	88.9	36.51	2,500	1



Created by: NH 03042020

We reserve the right to make product changes.

**RELIABLE, FLEXIBLE,  
CUSTOMER-ORIENTED**

**HEINRICH THULESIUS GMBH & CO. KG**  
Zum Panrepel 15, D-28307 Bremen, GERMANY



#### SERVICE

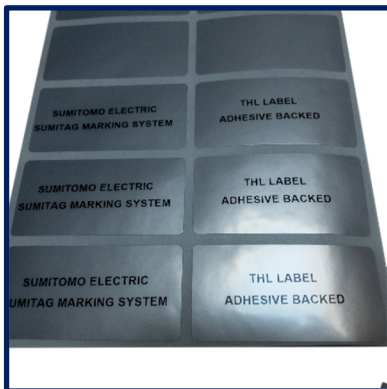
Tel: +49 (0) 421-4895-0  
Fax: +49 (0) 421-4895-225  
E-Mail: [info@thulesius.de](mailto:info@thulesius.de)  
[www.thulesius.de](http://www.thulesius.de)

# MARKING SYSTEM

## HTM-THL 730, gloss silver SumiTag Thermal Transfer Blank Printable Labels

### Technical characteristics

Property	Test	Inspection requirements		
		(oz/in)	Expected Range	(oz/in mNM)
Physical	Adhesion from:			
	- Stainless Steel	70	55-80	352-600
	- Acrylic	57	55-90	388-634
	- Glass	65	55-90	388-634
	Expected Shear:	100h		
Thermal	Minimum Application Temp.	10 °C		
Chemical	Topcoat	50,8 Micron		
	Film	Gloss Silver Polyester		
	Adhesive	Acryl 20.32 - 22.86 Micron +/- 0,01%		
	Liner	Densified Kraft 0,081 mm		



Delivery format:

Pre-cut on carrier material (is not perforated),  
on roll (printed or unprinted)

Created by: NH 03042020

We reserve the right to make product changes.

**RELIABLE, FLEXIBLE,  
CUSTOMER-ORIENTED**

**HEINRICH THULESIUS GMBH & CO. KG**  
Zum Panrepel 15, D-28307 Bremen, GERMANY



SERVICE

Tel: +49 (0) 421-48 95-0  
Fax: +49 (0) 421-48 95-225  
E-Mail: [info@thulesius.de](mailto:info@thulesius.de)  
[www.thulesius.de](http://www.thulesius.de)

**SUMITOMO  
ELECTRIC  
GROUP**